
Comfort-Aire®

Century®

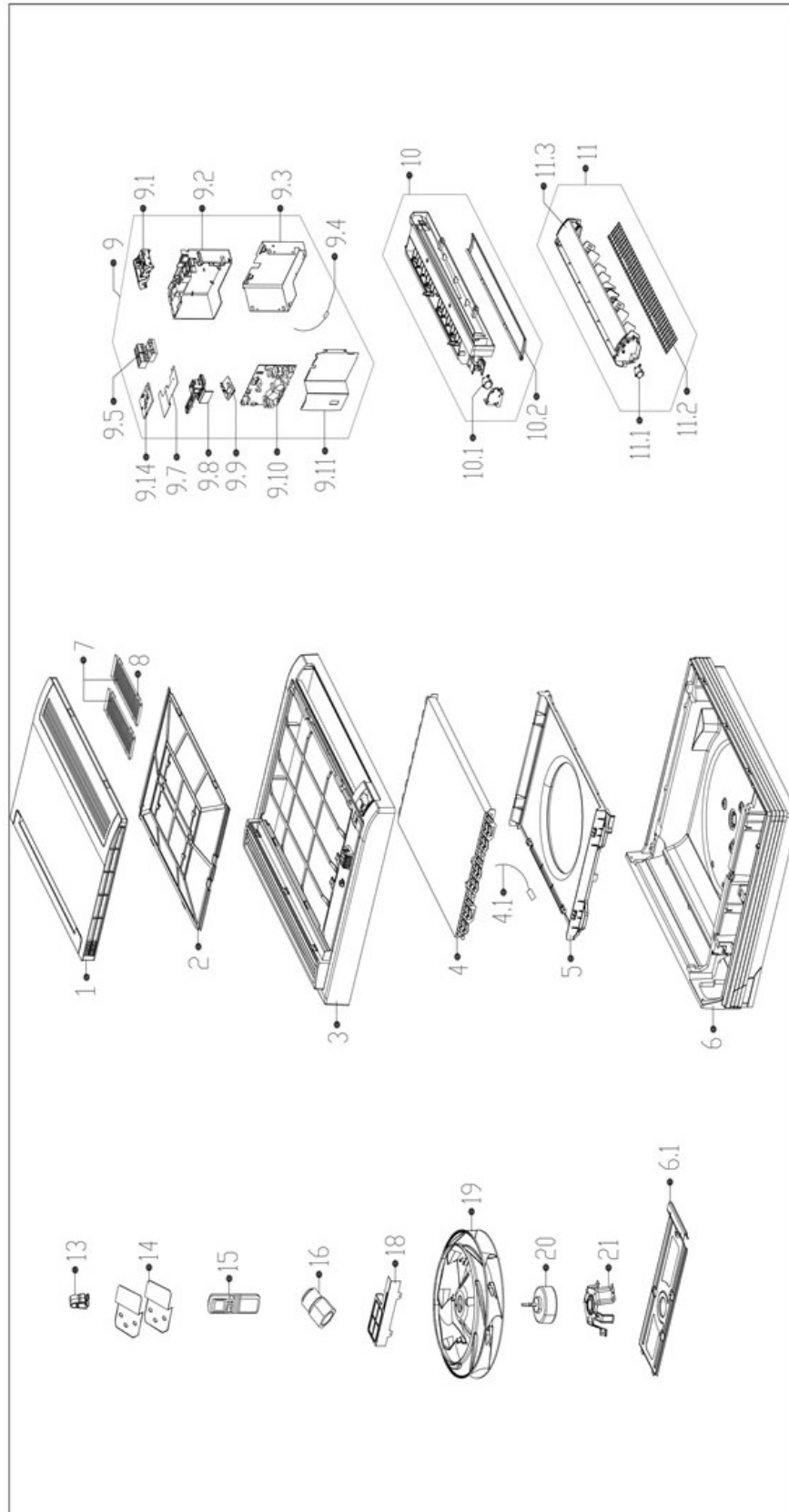


REPLACEMENT PARTS LIST

**Low Temperature Ductless
Mini-Split Indoor Floor Console**

B-VMH12FU-1

EXPLODED VIEW



REPLACEMENT PARTS

Location	Part Name	Quantity	Part No.
1	Panel assembly	1	12122600A00039
2	Air filter	1	12100204000704
3	Panel frame subassembly	1	12122600000026
4	Evaporator assembly	1	15822600A00164
4.1	Pipe Temperature Sensor	1	11201007000318
5	Ventilation subassembly	1	12122600000037
6	Chassis Assembly	1	12122600000035
6.1	Hang board subassembly	1	12222600000003
7	air fresh filter	2	12100204000685
8	air fresh filter	2	12122000007415
9	Electronic control box assembly	1	17222600000008
9.1	PCB support	1	12122600000030
9.2	Electronic control box	1	12122600000031
9.3	Electronic control boards	1	12222600000010
9.4	Room temp sensor assembly	1	11201007000073
9.5	Terminal	1	17400401000069
9.7	Electronic control box seal plate	1	12222600000008
9.8	PCB support	1	12122600000029
9.9	Display board subassembly	1	17122700000267
9.10	Main control board subassembly	1	17122700000040
9.11	Electronic control boards	1	12222600000009
9.14	Auxiliary electric heater control board subassembly	1	17122700000382
10	Water collector subassembly	1	12122600000007
10.1	stepper motor	1	11002010000002
10.2	Horizontal louver (below)	1	12122600000055
11	Air outlet subassembly	1	12122600000027
11.1	stepper motor	1	11002010000046
11.2	Rear net	1	12222600000006
11.3	Horizontal louver (above)	1	12122600000072
13	Pipe clamp	1	12100303000076
14	display board installation support	2	12222700000052
15	Remote controller	1	17317000A50504
18	Cover of electronic control box subassembly	1	12222600000027
19	centrifuge fan	1	12100103000016
20	Brushless DC Motor	1	11002015000337
21	Supporter of fan motor	1	12222600000068
25	Bracket of remote Controller	1	12117000002114

Due to ongoing product improvements, specifications and dimensions are subject to change and correction without notice or incurring obligations. Determining the application and suitability for use of any product is the responsibility of the installer. Additionally, the installer is responsible for verifying dimensional data on the actual product prior to beginning any installation preparations.

Incentive and rebate programs have precise requirements as to product performance and certification. All products meet applicable regulations in effect on date of manufacture; however, certifications are not necessarily granted for the life of a product. Therefore, it is the responsibility of the applicant to determine whether a specific model qualifies for these incentive/rebate programs.

Comfort-Cire®  **Century**®

1900 Wellworth Ave., Jackson, MI 49203 • Ph. 517-787-2100 • www.marsdelivers.com

